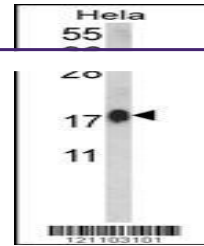
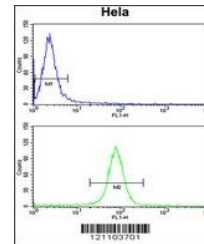

Product Datasheet

CALM1 Antibody (orb1262641)

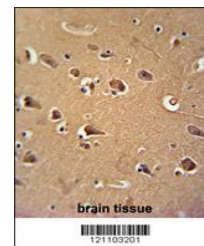
Description	CALM1 Antibody
Species/Host	Rabbit
Reactivity	Human
Conjugation	Unconjugated
Tested Applications	FC, IF, IHC-P, WB
Immunogen	This CALM1 antibody is generated from rabbits immunized with a KLH conjugated synthetic peptide between 107-132 amino acids from the C-terminal region of human CALM1.
Target	CALM1
Preservatives	Supplied in PBS with 0.09% (W/V) sodium azide.
Form/Appearance	Liquid
Concentration	batch dependent
Storage	Store at 4°C for three months and -20°C, stable for up to one year. As with all antibodies care should be taken to avoid repeated freeze thaw cycles. Antibodies should not be exposed to prolonged high temperatures.
Note	For research use only
Application notes	For WB starting dilution is: 1:1000For FACS starting dilution is: 1:10~50For IHC-P starting dilution is: 1:50~100For IF starting dilution is: 1:10~50
Isotype	Rabbit Ig
Clonality	Polyclonal
MW	17 kDa
Uniprot ID	P62158
NCBI	P62158
Dilution Range	For WB starting dilution is: 1:1000For FACS starting dilution is: 1:10~50For IHC-P starting dilution is: 1:50~100For IF starting dilution is: 1:10~50
Expiration Date	12 months from date of receipt.



Western blot analysis of CALM1 Antibody ...



Flow cytometry analysis of HeLa cells (b...



CALM1 Antibody immunohistochemistry anal...