
Product Datasheet

BABAM1 Antibody (orb1262630)

Description

BABAM1 Antibody

Species/Host

Rabbit

Reactivity

Human

Conjugation

Unconjugated

Tested Applications

FC, IHC-P, WB

Immunogen

This HSPC142 antibody is generated from rabbits immunized with a KLH conjugated synthetic peptide between 116-143 amino acids from the Central region of human HSPC142.

Target

BABAM1

Preservatives

Supplied in PBS with 0.09% (W/V) sodium azide.

Form/Appearance

Liquid

Concentration

batch dependent

Storage

Store at 4°C for three months and -20°C, stable for up to one year. As with all antibodies care should be taken to avoid repeated freeze thaw cycles. Antibodies should not be exposed to prolonged high temperatures.

Note

For research use only

Application notes

For IHC-P starting dilution is: 1:50~100 For WB starting dilution is: 1:1000 For FACS starting dilution is: 1:10~50

Isotype

Rabbit Ig

Clonality

Polyclonal

MW

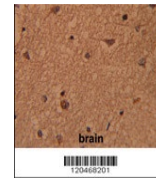
37 kDa

Uniprot ID
[Q9NWW8](#)
NCBI
[Q9NWW8](#)
Dilution Range

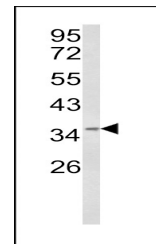
For IHC-P starting dilution is: 1:50~100 For WB starting dilution is: 1:1000 For FACS starting dilution is: 1:10~50

Expiration Date

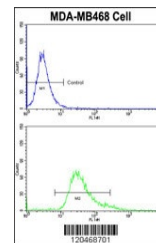
12 months from date of receipt.



Formalin-fixed and paraffin-embedded hum...



Western blot analysis of HSPC142 Antibod...



Flow cytometric analysis of MDA-MB468 ce...