
Product Datasheet

MICA Antibody (orb1262597)

Description

MICA Antibody

Species/Host

Rabbit

Reactivity

Human

Conjugation

Unconjugated

Tested Applications

FC, IF, IHC-P, WB

Immunogen

This MICA antibody is generated from rabbits immunized with a KLH conjugated synthetic peptide between 68-97 amino acids from the Central region of human MICA.

Target

MICA

Preservatives

Supplied in PBS with 0.09% (W/V) sodium azide.

Form/Appearance

Liquid

Concentration

batch dependent

Storage

Store at 4°C for three months and -20°C, stable for up to one year. As with all antibodies care should be taken to avoid repeated freeze thaw cycles. Antibodies should not be exposed to prolonged high temperatures.

Note

For research use only

Application notes

For IF starting dilution is: 1:25 For FACS starting dilution is: 1:25 For IHC-P starting dilution is: 1:25

Isotype

Rabbit Ig

Clonality

Polyclonal

MW

43 kDa

Uniprot ID

[Q29983](#)

NCBI

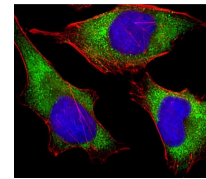
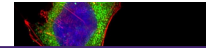
[Q29983](#)

Dilution Range

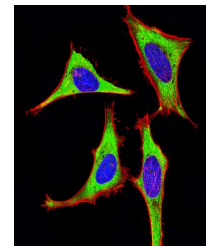
For IF starting dilution is: 1:25 For FACS starting dilution is: 1:25 For IHC-P starting dilution is: 1:25

Expiration Date

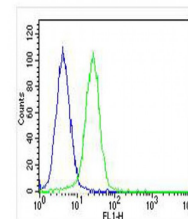
12 months from date of receipt.



Immunofluorescent analysis of 4% parafor...



Immunofluorescent analysis of 4% parafor...



Overlay histogram showing HeLa cells sta...