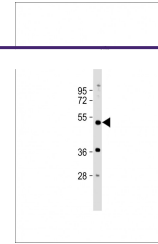
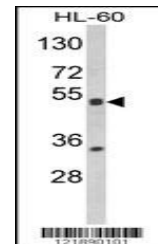

Product Datasheet

NR1I2 Antibody (orb1262571)

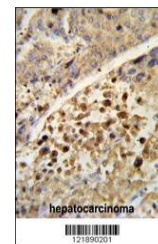
Description	NR112 Antibody
Species/Host	Rabbit
Reactivity	Human
Conjugation	Unconjugated
Tested Applications	FC, IF, IHC-P, WB
Immunogen	This NR112 antibody is generated from rabbits immunized with a KLH conjugated synthetic peptide between 100-127 amino acids from the Central region of human NR112.
Target	NR112
Preservatives	Supplied in PBS with 0.09% (W/V) sodium azide.
Form/Appearance	Liquid
Concentration	batch dependent
Storage	Store at 4°C for three months and -20°C, stable for up to one year. As with all antibodies care should be taken to avoid repeated freeze thaw cycles. Antibodies should not be exposed to prolonged high temperatures.
Note	For research use only
Application notes	For WB starting dilution is: 1:1000For IHC-P starting dilution is: 1:50~100For FACS starting dilution is: 1:10~50For IF starting dilution is: 1:10~50
Isotype	Rabbit Ig
Clonality	Polyclonal
MW	50 kDa
Uniprot ID	O75469
NCBI	O75469
Dilution Range	For WB starting dilution is: 1:1000For IHC-P starting dilution is: 1:50~100For FACS starting dilution is: 1:10~50For IF starting dilution is: 1:10~50
Expiration Date	12 months from date of receipt.



Western Blot at 1:1000 dilution + Hela w...



Western blot analysis of NR112 Antibody ...



Formalin-fixed and paraffin-embedded hum...