

---

## Product Datasheet

### HNF1A Antibody (orb1262545)

**Description**

HNF1A Antibody

**Species/Host**

Rabbit

**Reactivity**

Human, Mouse

**Conjugation**

Unconjugated

**Tested Applications**

IF, WB

**Immunogen**

This HNF1A antibody is generated from rabbits immunized with a KLH conjugated synthetic peptide between 177-205 amino acids from the Central region of human HNF1A.

**Target**

HNF1A

**Preservatives**

Supplied in PBS with 0.09% (W/V) sodium azide.

**Form/Appearance**

Liquid

**Concentration**

batch dependent

**Storage**

Store at 4°C for three months and -20°C, stable for up to one year. As with all antibodies care should be taken to avoid repeated freeze thaw cycles. Antibodies should not be exposed to prolonged high temperatures.

**Note**

For research use only

**Application notes**

For WB starting dilution is: 1:1000 For IF starting dilution is: 1:10~50

**Isotype**

Rabbit Ig

**Clonality**

Polyclonal

**MW**

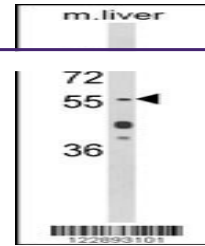
67 kDa

**Uniprot ID**
[P20823](#)
**NCBI**
[P20823](#)
**Dilution Range**

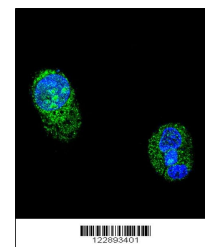
For WB starting dilution is: 1:1000 For IF starting dilution is: 1:10~50

**Expiration Date**

12 months from date of receipt.



Western blot analysis of HNF1A Antibody ...



Confocal immunofluorescent analysis of H...