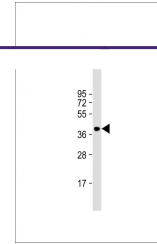
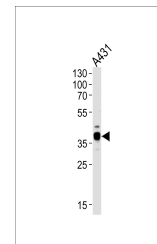

Product Datasheet

ARPC1B Antibody (orb1262526)

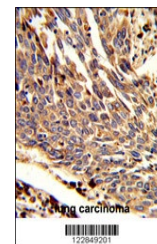
Description	ARPC1B Antibody
Species/Host	Rabbit
Reactivity	Human
Conjugation	Unconjugated
Tested Applications	FC, IHC-P, WB
Immunogen	This ARPC1B antibody is generated from rabbits immunized with a KLH conjugated synthetic peptide between 159-188 amino acids from the Central region of human ARPC1B.
Target	ARPC1B
Preservatives	Supplied in PBS with 0.09% (W/V) sodium azide.
Form/Appearance	Liquid
Concentration	batch dependent
Storage	Store at 4°C for three months and -20°C, stable for up to one year. As with all antibodies care should be taken to avoid repeated freeze thaw cycles. Antibodies should not be exposed to prolonged high temperatures.
Note	For research use only
Application notes	For WB starting dilution is: 1:1000For IHC-P starting dilution is: 1:50~100For FACS starting dilution is: 1:10~50
Isotype	Rabbit Ig
Clonality	Polyclonal
MW	41 kDa
Uniprot ID	O15143
NCBI	O15143
Dilution Range	For WB starting dilution is: 1:1000For IHC-P starting dilution is: 1:50~100For FACS starting dilution is: 1:10~50
Expiration Date	12 months from date of receipt.



Western Blot at 1:1000 dilution + Hela w...



Western blot analysis of lysate from A43...



Formalin-fixed and paraffin-embedded hum...