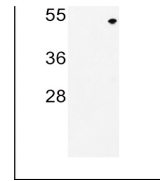
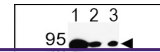
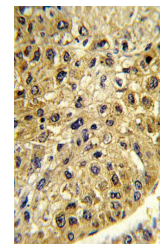

Product Datasheet

DCT Antibody (orb1262518)

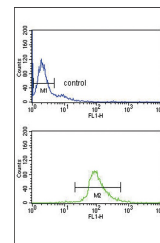
Description	DCT Antibody
Species/Host	Rabbit
Reactivity	Human
Conjugation	Unconjugated
Tested Applications	FC, IHC-P, WB
Immunogen	This DCT antibody is generated from rabbits immunized with a KLH conjugated synthetic peptide between 62-89 amino acids from the N-terminal region of human DCT.
Target	DCT
Preservatives	Supplied in PBS with 0.09% (W/V) sodium azide.
Form/Appearance	Liquid
Concentration	batch dependent
Storage	Store at 4°C for three months and -20°C, stable for up to one year. As with all antibodies care should be taken to avoid repeated freeze thaw cycles. Antibodies should not be exposed to prolonged high temperatures.
Note	For research use only
Application notes	For WB starting dilution is: 1:1000For IHC-P starting dilution is: 1:10~50For FACS starting dilution is: 1:10~50
Isotype	Rabbit Ig
Clonality	Polyclonal
MW	59 kDa
Uniprot ID	P40126
NCBI	P40126
Dilution Range	For WB starting dilution is: 1:1000For IHC-P starting dilution is: 1:10~50For FACS starting dilution is: 1:10~50
Expiration Date	12 months from date of receipt.



Western blot analysis of DCT Antibody in...



Formalin-fixed and paraffin-embedded hum...



Flow cytometry analysis of Ramos cells (...)