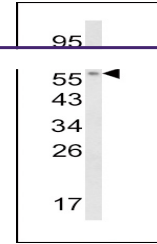
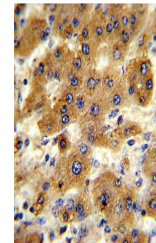

Product Datasheet

CYP8B1 Antibody (orb1262510)

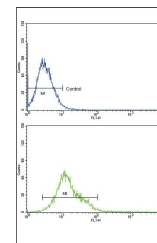
| | |
|----------------------------|--|
| Description | CYP8B1 Antibody |
| Species/Host | Rabbit |
| Reactivity | Human |
| Conjugation | Unconjugated |
| Tested Applications | FC, IHC-P, WB |
| Immunogen | This CYP8B1 antibody is generated from rabbits immunized with a KLH conjugated synthetic peptide between 471-501 amino acids from the C-terminal region of human CYP8B1. |
| Target | CYP8B1 |
| Preservatives | Supplied in PBS with 0.09% (W/V) sodium azide. |
| Form/Appearance | Liquid |
| Concentration | batch dependent |
| Storage | Store at 4°C for three months and -20°C, stable for up to one year. As with all antibodies care should be taken to avoid repeated freeze thaw cycles. Antibodies should not be exposed to prolonged high temperatures. |
| Note | For research use only |
| Application notes | For WB starting dilution is: 1:1000For IHC-P starting dilution is: 1:10~50For FACS starting dilution is: 1:10~50 |
| Isotype | Rabbit Ig |
| Clonality | Polyclonal |
| MW | 58 kDa |
| Uniprot ID | Q9UNU6 |
| NCBI | Q9UNU6 |
| Dilution Range | For WB starting dilution is: 1:1000For IHC-P starting dilution is: 1:10~50For FACS starting dilution is: 1:10~50 |
| Expiration Date | 12 months from date of receipt. |



Western blot analysis of CYP8B1 Antibody...



Formalin-fixed and paraffin-embedded hum...



Flow cytometric analysis of k562 cells (...)