
Product Datasheet

SCNN1A Antibody (orb1262503)

Description

SCNN1A Antibody

Species/Host

Rabbit

Reactivity

Human

Conjugation

Unconjugated

Tested Applications

FC, IF, IHC-P, WB

Immunogen

This SCNN1A antibody is generated from rabbits immunized with a KLH conjugated synthetic peptide between 365-391 amino acids from the Central region of human SCNN1A.

Target

SCNN1A

Preservatives

Supplied in PBS with 0.09% (W/V) sodium azide.

Form/Appearance

Liquid

Concentration

batch dependent

Storage

Store at 4°C for three months and -20°C, stable for up to one year. As with all antibodies care should be taken to avoid repeated freeze thaw cycles. Antibodies should not be exposed to prolonged high temperatures.

Note

For research use only

Application notes

For WB starting dilution is: 1:2000
For FACS starting dilution is: 1:25
For IHC-P starting dilution is: 1:10~50
For IF starting dilution is: 1:10~50

Isotype

Rabbit Ig

Clonality

Polyclonal

MW

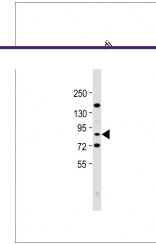
76 kDa

Uniprot ID
[P37088](#)
NCBI
[P37088](#)
Dilution Range

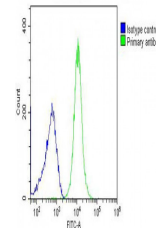
For WB starting dilution is: 1:2000
For FACS starting dilution is: 1:25
For IHC-P starting dilution is: 1:10~50
For IF starting dilution is: 1:10~50

Expiration Date

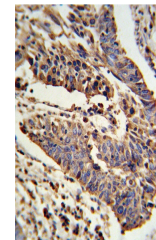
12 months from date of receipt.



Western Blot at 1:2000 dilution + Daudi ...



Overlay histogram showing WiDr cells sta...



Formalin-fixed and paraffin-embedded hum...