

## Product Datasheet

### EWSR1 Antibody (orb1262496)

**Description**

EWSR1 Antibody

**Species/Host**

Rabbit

**Reactivity**

Human

**Conjugation**

Unconjugated

**Tested**

FC, IF, WB

**Applications**
**Immunogen**

This EWSR1 antibody is generated from rabbits immunized with a KLH conjugated synthetic peptide between 628-656 amino acids from the C-terminal region of human EWSR1.

**Target**

EWSR1

**Preservatives**

Supplied in PBS with 0.09% (W/V) sodium azide.

**Form/Appearance**

Liquid

**Concentration**

batch dependent

**Storage**

Store at 4°C for three months and -20°C, stable for up to one year. As with all antibodies care should be taken to avoid repeated freeze thaw cycles. Antibodies should not be exposed to prolonged high temperatures.

**Note**

For research use only

**Application notes**

For IF starting dilution is: 1:10~50  
For WB starting dilution is: 1:1000  
For FACS starting dilution is: 1:10~50

**Isotype**

Rabbit Ig

**Clonality**

Polyclonal

**MW**

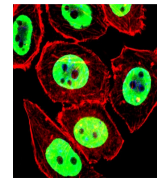
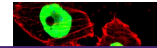
68 kDa

**Uniprot ID**
[Q01844](#)
**NCBI**
[Q01844](#)
**Dilution Range**

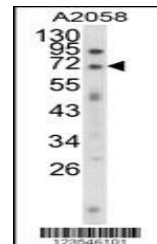
For IF starting dilution is: 1:10~50  
For WB starting dilution is: 1:1000  
For FACS starting dilution is: 1:10~50

**Expiration Date**

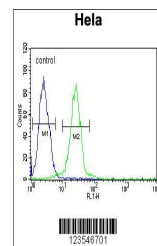
12 months from date of receipt.



Fluorescent confocal image of U251 cell ...



Western blot analysis of EWSR1 Antibody ...



Flow cytometric analysis of HeLa cells (...)