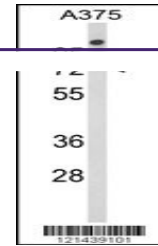
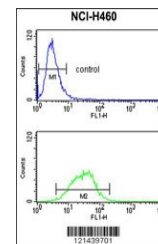

Product Datasheet

MAG Antibody (orb1262488)

Description	MAG Antibody
Species/Host	Rabbit
Reactivity	Human
Conjugation	Unconjugated
Tested Applications	FC, WB
Immunogen	This MAG antibody is generated from rabbits immunized with a KLH conjugated synthetic peptide between 439-466 amino acids from the Central region of human MAG.
Target	MAG
Preservatives	Supplied in PBS with 0.09% (W/V) sodium azide.
Form/Appearance	Liquid
Concentration	batch dependent
Storage	Store at 4°C for three months and -20°C, stable for up to one year. As with all antibodies care should be taken to avoid repeated freeze thaw cycles. Antibodies should not be exposed to prolonged high temperatures.
Note	For research use only
Application notes	For WB starting dilution is: 1:1000For FACS starting dilution is: 1:10~50
Isotype	Rabbit Ig
Clonality	Polyclonal
MW	69 kDa
Uniprot ID	P20916
NCBI	P20916
Dilution Range	For WB starting dilution is: 1:1000For FACS starting dilution is: 1:10~50
Expiration Date	12 months from date of receipt.



Western blot analysis of MAG Antibody in...



Flow cytometry analysis of NCI-H460 cell...