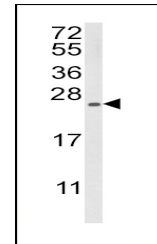


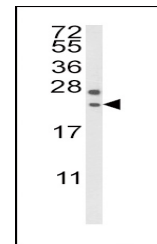
Product Datasheet

RGS4 Antibody (orb1262469)

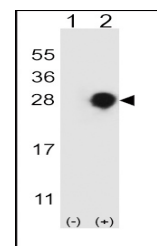
Description	RGS4 Antibody
Species/Host	Rabbit
Reactivity	Human, Mouse
Conjugation	Unconjugated
Tested Applications	WB
Immunogen	This RGS4 antibody is generated from rabbits immunized with a KLH conjugated synthetic peptide between 147-174 amino acids from the Central region of human RGS4.
Target	RGS4
Preservatives	Supplied in PBS with 0.09% (W/V) sodium azide.
Form/Appearance	Liquid
Concentration	batch dependent
Storage	Store at 4°C for three months and -20°C, stable for up to one year. As with all antibodies care should be taken to avoid repeated freeze thaw cycles. Antibodies should not be exposed to prolonged high temperatures.
Note	For research use only
Application notes	For WB starting dilution is: 1:1000
Isotype	Rabbit Ig
Clonality	Polyclonal
MW	23 kDa
Uniprot ID	P49798
NCBI	P49798
Dilution Range	For WB starting dilution is: 1:1000
Expiration Date	12 months from date of receipt.



Western blot analysis of RGS4 Antibody i...



Western blot analysis of RGS4 Antibody i...



Western blot analysis of RGS4 using rabb...