
Product Datasheet

PIN1 Antibody (orb1262436)

Description

PIN1 Antibody

Species/Host

Rabbit

Reactivity

Human

Conjugation

Unconjugated

Tested Applications

FC, IF, IHC-P, WB

Applications
Immunogen

This PIN1 antibody is generated from rabbits immunized with a KLH conjugated synthetic peptide between 30-56 amino acids from the Central region of human PIN1.

Target

PIN1

Preservatives

Supplied in PBS with 0.09% (W/V) sodium azide.

Form/Appearance

Liquid

Concentration

batch dependent

Storage

Store at 4°C for three months and -20°C, stable for up to one year. As with all antibodies care should be taken to avoid repeated freeze thaw cycles. Antibodies should not be exposed to prolonged high temperatures.

Note

For research use only

Application notes

For WB starting dilution is: 1:1000
For IHC-P starting dilution is: 1:50~100
For FACS starting dilution is: 1:10~50
For IF starting dilution is: 1:10~50

Isotype

Rabbit Ig

Clonality

Polyclonal

MW

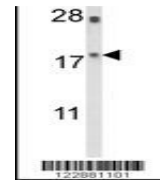
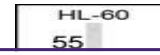
18 kDa

Uniprot ID
[Q13526](#)
NCBI
[Q13526](#)
Dilution Range

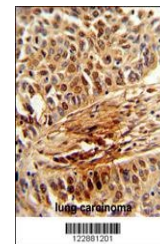
For WB starting dilution is: 1:1000
For IHC-P starting dilution is: 1:50~100
For FACS starting dilution is: 1:10~50
For IF starting dilution is: 1:10~50

Expiration Date

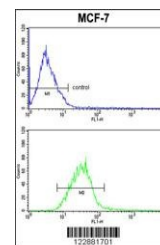
12 months from date of receipt.



Western blot analysis of PIN1 Antibody i...



Formalin-fixed and paraffin-embedded hum...



PIN1 Antibody FC analysis of MCF-7 cells...