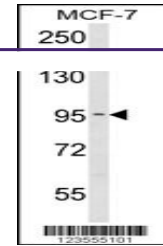
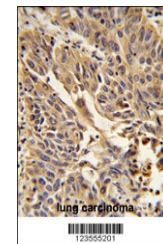

Product Datasheet

JUP Antibody (orb1262421)

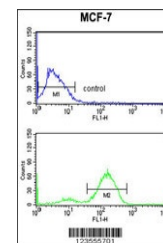
Description	JUP Antibody
Species/Host	Rabbit
Reactivity	Human
Conjugation	Unconjugated
Tested Applications	FC, IHC-P, WB
Immunogen	This JUP antibody is generated from rabbits immunized with a KLH conjugated synthetic peptide between 636-663 amino acids from the C-terminal region of human JUP.
Target	JUP
Preservatives	Supplied in PBS with 0.09% (W/V) sodium azide.
Form/Appearance	Liquid
Concentration	batch dependent
Storage	Store at 4°C for three months and -20°C, stable for up to one year. As with all antibodies care should be taken to avoid repeated freeze thaw cycles. Antibodies should not be exposed to prolonged high temperatures.
Note	For research use only
Application notes	For WB starting dilution is: 1:1000For IHC-P starting dilution is: 1:50~100For FACS starting dilution is: 1:10~50
Isotype	Rabbit Ig
Clonality	Polyclonal
MW	82 kDa
Uniprot ID	P14923
NCBI	P14923
Dilution Range	For WB starting dilution is: 1:1000For IHC-P starting dilution is: 1:50~100For FACS starting dilution is: 1:10~50
Expiration Date	12 months from date of receipt.



Western blot analysis of JUP Antibody in...



Formalin-fixed and paraffin-embedded hum...



Flow cytometry analysis of MCF-7 cells (...)