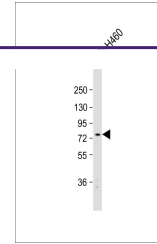
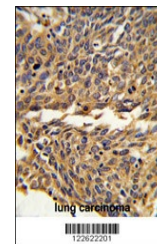

Product Datasheet

EXOC5 Antibody (orb1262415)

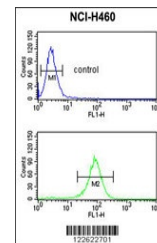
Description	EXOC5 Antibody
Species/Host	Rabbit
Reactivity	Human
Conjugation	Unconjugated
Tested Applications	FC, IHC-P, WB
Immunogen	This EXOC5 antibody is generated from rabbits immunized with a KLH conjugated synthetic peptide between 40-66 amino acids from the C-terminal region of human EXOC5.
Target	EXOC5
Preservatives	Supplied in PBS with 0.09% (W/V) sodium azide.
Form/Appearance	Liquid
Concentration	batch dependent
Storage	Store at 4°C for three months and -20°C, stable for up to one year. As with all antibodies care should be taken to avoid repeated freeze thaw cycles. Antibodies should not be exposed to prolonged high temperatures.
Note	For research use only
Application notes	For WB starting dilution is: 1:1000For IHC-P starting dilution is: 1:50~100For FACS starting dilution is: 1:10~50
Isotype	Rabbit Ig
Clonality	Polyclonal
MW	82 kDa
Uniprot ID	O00471
NCBI	O00471
Dilution Range	For WB starting dilution is: 1:1000For IHC-P starting dilution is: 1:50~100For FACS starting dilution is: 1:10~50
Expiration Date	12 months from date of receipt.



Western Blot at 1:1000 dilution + NCI-H4...



Formalin-fixed and paraffin-embedded hum...



Flow cytometric analysis of NCI-H460 cel...