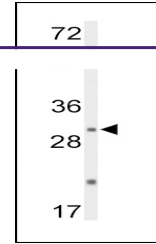


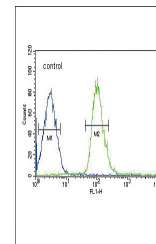
Product Datasheet

DUSP2 Antibody (orb1262381)

Description	DUSP2 Antibody
Species/Host	Rabbit
Reactivity	Human, Mouse
Conjugation	Unconjugated
Tested Applications	FC, WB
Immunogen	This DUSP2 antibody is generated from rabbits immunized with a KLH conjugated synthetic peptide between 262-290 amino acids from the C-terminal region of human DUSP2.
Target	DUSP2
Preservatives	Supplied in PBS with 0.09% (W/V) sodium azide.
Form/Appearance	Liquid
Concentration	batch dependent
Storage	Store at 4°C for three months and -20°C, stable for up to one year. As with all antibodies care should be taken to avoid repeated freeze thaw cycles. Antibodies should not be exposed to prolonged high temperatures.
Note	For research use only
Application notes	For WB starting dilution is: 1:1000 For FACS starting dilution is: 1:10~50
Isotype	Rabbit Ig
Clonality	Polyclonal
MW	34 kDa
Uniprot ID	Q05923
NCBI	Q05923
Dilution Range	For WB starting dilution is: 1:1000 For FACS starting dilution is: 1:10~50
Expiration Date	12 months from date of receipt.



Western blot analysis of DUSP2 Antibody ...



Flow cytometric analysis of HepG2 cells ...