
Product Datasheet

HMGA1 Antibody (orb1262374)

Description

HMGA1 Antibody

Species/Host

Rabbit

Reactivity

Human

Conjugation

Unconjugated

Tested

FC, IF, WB

Applications
Immunogen

This HMGA1 antibody is generated from rabbits immunized with a KLH conjugated synthetic peptide between 64-93 amino acids from the C-terminal region of human HMGA1.

Target

HMGA1

Preservatives

Supplied in PBS with 0.09% (W/V) sodium azide.

Form/Appearance

Liquid

Concentration

batch dependent

Storage

Store at 4°C for three months and -20°C, stable for up to one year. As with all antibodies care should be taken to avoid repeated freeze thaw cycles. Antibodies should not be exposed to prolonged high temperatures.

Note

For research use only

Application notes

For WB starting dilution is: 1:1000 For IF starting dilution is: 1:10~50 For FACS starting dilution is: 1:10~50

Isotype

Rabbit Ig

Clonality

Polyclonal

MW

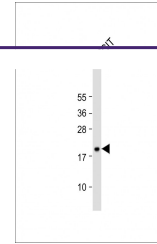
12 kDa

Uniprot ID
[P17096](#)
NCBI
[P17096](#)
Dilution Range

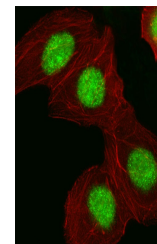
For WB starting dilution is: 1:1000 For IF starting dilution is: 1:10~50 For FACS starting dilution is: 1:10~50

Expiration Date

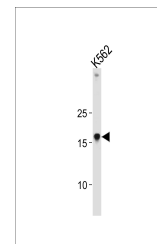
12 months from date of receipt.



Western Blot at 1:1000 dilution + NCCIT ...



Fluorescent image of A549 cell stained w...



Western blot analysis in K562 cell line ...