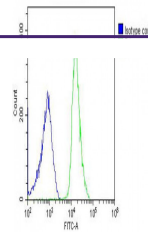
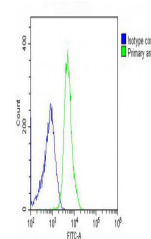

Product Datasheet

CDC73 Antibody (orb1262332)

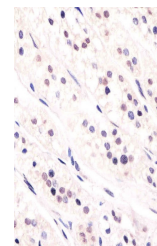
Description	CDC73 Antibody
Species/Host	Rabbit
Reactivity	Human
Conjugation	Unconjugated
Tested Applications	FC, IF, IHC-P, WB
Immunogen	This CDC73 antibody is generated from rabbits immunized with a KLH conjugated synthetic peptide between 132-161 amino acids from the Central region of human CDC73.
Target	CDC73
Preservatives	Supplied in PBS with 0.09% (W/V) sodium azide.
Form/Appearance	Liquid
Concentration	batch dependent
Storage	Store at 4°C for three months and -20°C, stable for up to one year. As with all antibodies care should be taken to avoid repeated freeze thaw cycles. Antibodies should not be exposed to prolonged high temperatures.
Note	For research use only
Application notes	For FACS starting dilution is: 1:25For IHC-P starting dilution is: 1:25For WB starting dilution is: 1:1000For IF starting dilution is: 1:10~50
Isotype	Rabbit Ig
Clonality	Polyclonal
MW	61 kDa
Uniprot ID	Q6P1J9
NCBI	Q6P1J9
Dilution Range	For FACS starting dilution is: 1:25For IHC-P starting dilution is: 1:25For WB starting dilution is: 1:1000For IF starting dilution is: 1:10~50
Expiration Date	12 months from date of receipt.



Overlay histogram showing U-2OS cells st...



Overlay histogram showing U-2OS cells st...



Antibody staining CDC73 in human adrenal...