
Product Datasheet

ANGPTL4 Antibody (orb1262320)

Description

ANGPTL4 Antibody

Species/Host

Rabbit

Reactivity

Human

Conjugation

Unconjugated

Tested Applications

FC, IHC-P, WB

Immunogen

This ANGPTL4 antibody is generated from rabbits immunized with a KLH conjugated synthetic peptide between 138-167 amino acids from the Central region of human ANGPTL4.

Target

ANGPTL4

Preservatives

Supplied in PBS with 0.09% (W/V) sodium azide.

Form/Appearance

Liquid

Concentration

batch dependent

Storage

Store at 4°C for three months and -20°C, stable for up to one year. As with all antibodies care should be taken to avoid repeated freeze thaw cycles. Antibodies should not be exposed to prolonged high temperatures.

Note

For research use only

Application notes

For FACS starting dilution is: 1:25 For WB starting dilution is: 1:1000 For IHC-P starting dilution is: 1:50~100

Isotype

Rabbit Ig

Clonality

Polyclonal

MW

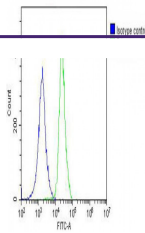
45 kDa

Uniprot ID
[Q9BY76](#)
NCBI
[Q9BY76](#)
Dilution Range

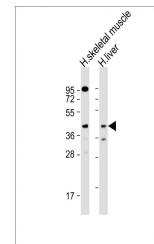
For FACS starting dilution is: 1:25 For WB starting dilution is: 1:1000 For IHC-P starting dilution is: 1:50~100

Expiration Date

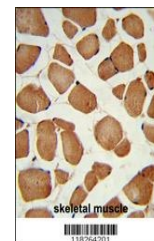
12 months from date of receipt.



Overlay histogram showing A549 cells sta...



Western Blot at 1:1000 dilution Lane 1: ...



Formalin-fixed and paraffin-embedded hum...