
Product Datasheet

SH3BGRL3 Antibody (orb1262278)

Description

SH3BGRL3 Antibody

Species/Host

Rabbit

Reactivity

Human

Conjugation

Unconjugated

Tested Applications

IHC-P, WB

Immunogen

This SH3BGRL3 antibody is generated from rabbits immunized with a KLH conjugated synthetic peptide between 24-52 amino acids from the Central region of human SH3BGRL3.

Target

SH3BGRL3

Preservatives

Supplied in PBS with 0.09% (W/V) sodium azide.

Form/Appearance

Liquid

Concentration

batch dependent

Storage

Store at 4°C for three months and -20°C, stable for up to one year. As with all antibodies care should be taken to avoid repeated freeze thaw cycles. Antibodies should not be exposed to prolonged high temperatures.

Note

For research use only

Application notes

For WB starting dilution is: 1:1000 For IHC-P starting dilution is: 1:50~100

Isotype

Rabbit Ig

Clonality

Polyclonal

MW

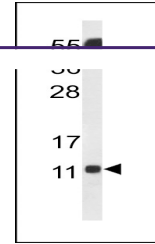
10 kDa

Uniprot ID
[Q9H299](#)
NCBI
[Q9H299](#)
Dilution Range

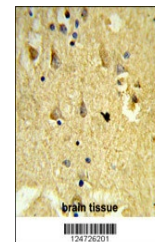
For WB starting dilution is: 1:1000 For IHC-P starting dilution is: 1:50~100

Expiration Date

12 months from date of receipt.



Western blot analysis of SH3BGRL3 Antibo...



Formalin-fixed and paraffin-embedded hum...