
Product Datasheet

CROT Antibody (orb1262243)

Description

CROT Antibody

Species/Host

Rabbit

Reactivity

Human, Mouse

Conjugation

Unconjugated

Tested Applications

FC, IHC-P, WB

Immunogen

This CROT antibody is generated from rabbits immunized with a KLH conjugated synthetic peptide between 49-79 amino acids from the N-terminal region of human CROT.

Target

CROT

Preservatives

Supplied in PBS with 0.09% (W/V) sodium azide.

Form/Appearance

Liquid

Concentration

batch dependent

Storage

Store at 4°C for three months and -20°C, stable for up to one year. As with all antibodies care should be taken to avoid repeated freeze thaw cycles. Antibodies should not be exposed to prolonged high temperatures.

Note

For research use only

Application notes

For FACS starting dilution is: 1:10~50
For IHC-P starting dilution is: 1:50~100
For WB starting dilution is: 1:1000

Isotype

Rabbit Ig

Clonality

Polyclonal

MW

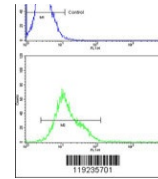
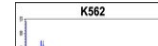
70 kDa

Uniprot ID
[Q9UKG9](#)
NCBI
[Q9UKG9](#)
Dilution Range

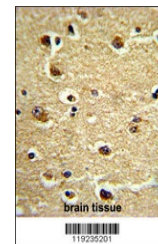
For FACS starting dilution is: 1:10~50
For IHC-P starting dilution is: 1:50~100
For WB starting dilution is: 1:1000

Expiration Date

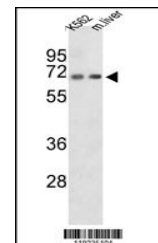
12 months from date of receipt.



Flow cytometric analysis of K562 cells (...)



Formalin-fixed and paraffin-embedded hum...



Western blot analysis of CROT Antibody i...