
Product Datasheet

CPLX1 Antibody (orb1262228)

Description

CPLX1 Antibody

Species/Host

Rabbit

Reactivity

Mouse

Conjugation

Unconjugated

Tested

IHC-P, WB

Applications
Immunogen

This CPLX1 antibody is generated from rabbits immunized with a KLH conjugated synthetic peptide between 33-60 amino acids from the Central region of human CPLX1.

Target

CPLX1

Preservatives

Supplied in PBS with 0.09% (W/V) sodium azide.

Form/Appearance

Liquid

Concentration

batch dependent

Storage

Store at 4°C for three months and -20°C, stable for up to one year. As with all antibodies care should be taken to avoid repeated freeze thaw cycles. Antibodies should not be exposed to prolonged high temperatures.

Note

For research use only

Application notes

For WB starting dilution is: 1:1000
For IHC-P starting dilution is: 1:10~50

Isotype

Rabbit Ig

Clonality

Polyclonal

MW

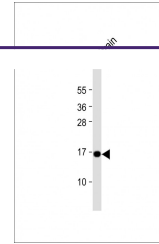
15 kDa

Uniprot ID
[O14810](#)
NCBI
[O14810](#)
Dilution Range

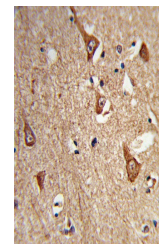
For WB starting dilution is: 1:1000
For IHC-P starting dilution is: 1:10~50

Expiration Date

12 months from date of receipt.



Western Blot at 1:1000 dilution + mouse ...



Formalin-fixed and paraffin-embedded hum...