

---

## Product Datasheet

### IL2RG Antibody (orb1262210)

**Description**

IL2RG Antibody

**Species/Host**

Rabbit

**Reactivity**

Human

**Conjugation**

Unconjugated

**Tested Applications**

FC, IF, WB

**Immunogen**

This IL2RG antibody is generated from rabbits immunized with a KLH conjugated synthetic peptide between 76-101 amino acids from the N-terminal region of human IL2RG.

**Target**

IL2RG

**Preservatives**

Supplied in PBS with 0.09% (W/V) sodium azide.

**Form/Appearance**

Liquid

**Concentration**

batch dependent

**Storage**

Store at 4°C for three months and -20°C, stable for up to one year. As with all antibodies care should be taken to avoid repeated freeze thaw cycles. Antibodies should not be exposed to prolonged high temperatures.

**Note**

For research use only

**Application notes**

For IF starting dilution is: 1:25  
For WB starting dilution is: 1:1000  
For FACS starting dilution is: 1:10~50

**Isotype**

Rabbit Ig

**Clonality**

Polyclonal

**MW**

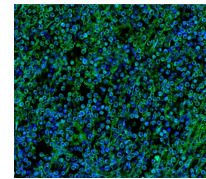
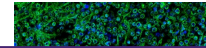
42 kDa

**Uniprot ID**
[P31785](#)
**NCBI**
[P31785](#)
**Dilution Range**

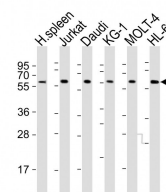
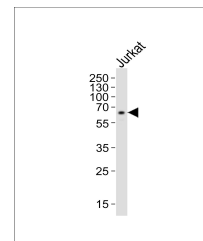
For IF starting dilution is: 1:25  
For WB starting dilution is: 1:1000  
For FACS starting dilution is: 1:10~50

**Expiration Date**

12 months from date of receipt.



Immunofluorescent analysis of 4% parafor...


 Western Blot at 1:2000 dilution  
Lane 1: ...


Western blot analysis of lysate from Jur...