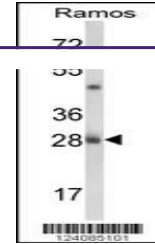
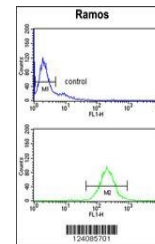

Product Datasheet

NUCKS1 Antibody (orb1262175)

Description	NUCKS1 Antibody
Species/Host	Rabbit
Reactivity	Human
Conjugation	Unconjugated
Tested Applications	FC, WB
Immunogen	This NUCKS1 antibody is generated from rabbits immunized with a KLH conjugated synthetic peptide between 45-73 amino acids from the N-terminal region of human NUCKS1.
Target	NUCKS1
Preservatives	Supplied in PBS with 0.09% (W/V) sodium azide.
Form/Appearance	Liquid
Concentration	batch dependent
Storage	Store at 4°C for three months and -20°C, stable for up to one year. As with all antibodies care should be taken to avoid repeated freeze thaw cycles. Antibodies should not be exposed to prolonged high temperatures.
Note	For research use only
Application notes	For WB starting dilution is: 1:1000 For FACS starting dilution is: 1:10~50
Isotype	Rabbit Ig
Clonality	Polyclonal
MW	27 kDa
Uniprot ID	Q9H1E3
NCBI	Q9H1E3
Dilution Range	For WB starting dilution is: 1:1000 For FACS starting dilution is: 1:10~50
Expiration Date	12 months from date of receipt.



Western blot analysis of NUCKS1 Antibody...



Flow cytometry analysis of Ramos cells (...)