
Product Datasheet

MT-CO1 Antibody (orb1262101)

Description

MT-CO1 Antibody

Species/Host

Rabbit

Reactivity

Human

Conjugation

Unconjugated

Tested

IF, WB

Applications
Immunogen

This COXI antibody is generated from rabbits immunized with a KLH conjugated synthetic peptide between 195-224 amino acids from the Central region of human COXI.

Target

MT-CO1

Preservatives

Supplied in PBS with 0.09% (W/V) sodium azide.

Form/Appearance

Liquid

Concentration

batch dependent

Storage

Store at 4°C for three months and -20°C, stable for up to one year. As with all antibodies care should be taken to avoid repeated freeze thaw cycles. Antibodies should not be exposed to prolonged high temperatures.

Note

For research use only

Application notes

For WB starting dilution is: 1:2000 For IF starting dilution is: 1:10~50

Isotype

Rabbit IgG

Clonality

Polyclonal

MW

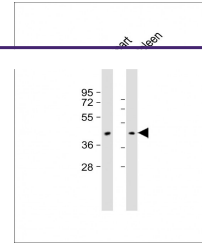
57 kDa

Uniprot ID
[P00395](#)
NCBI
[P00395](#)
Dilution Range

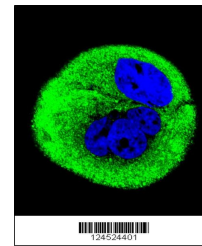
For WB starting dilution is: 1:2000 For IF starting dilution is: 1:10~50

Expiration Date

12 months from date of receipt.



Western Blot at
1:2000 dilution
Lane 1: ...



Confocal
immunofluorescent
analysis of C...