
Product Datasheet

PLA2G7 Antibody (orb1262035)

Description

PLA2G7 Antibody

Species/Host

Rabbit

Reactivity

Human

Conjugation

Unconjugated

Tested Applications

FC, IHC-P, WB

Immunogen

This PLA2G7 antibody is generated from rabbits immunized with a KLH conjugated synthetic peptide between 200-228 amino acids from the Central region of human PLA2G7.

Target

PLA2G7

Preservatives

Supplied in PBS with 0.09% (W/V) sodium azide.

Form/Appearance

Liquid

Concentration

batch dependent

Storage

Store at 4°C for three months and -20°C, stable for up to one year. As with all antibodies care should be taken to avoid repeated freeze thaw cycles. Antibodies should not be exposed to prolonged high temperatures.

Note

For research use only

Application notes

For FACS starting dilution is: 1:25 For WB starting dilution is: 1:1000 For IHC-P starting dilution is: 1:10~50

Isotype

Rabbit Ig

Clonality

Polyclonal

MW

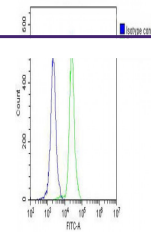
50 kDa

Uniprot ID
[Q13093](#)
NCBI
[Q13093](#)
Dilution Range

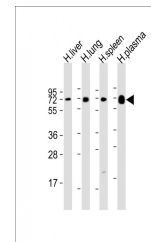
For FACS starting dilution is: 1:25 For WB starting dilution is: 1:1000 For IHC-P starting dilution is: 1:10~50

Expiration Date

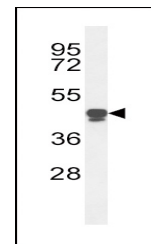
12 months from date of receipt.



Overlay histogram showing HL-60 cells st...



Western Blot at 1:2000 dilution Lane 1: ...



Western blot analysis of PLA2G7 Antibody...