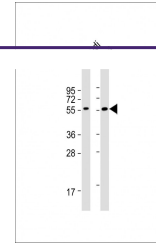
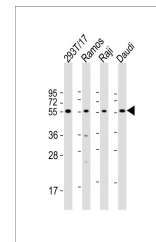

Product Datasheet

FCRL4 Antibody (orb1262022)

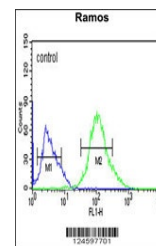
Description	FCRL4 Antibody
Species/Host	Rabbit
Reactivity	Human
Conjugation	Unconjugated
Tested Applications	FC, WB
Immunogen	This FCRL4 antibody is generated from rabbits immunized with a KLH conjugated synthetic peptide between 480-507 amino acids from the C-terminal region of human FCRL4.
Target	FCRL4
Preservatives	Supplied in PBS with 0.09% (W/V) sodium azide.
Form/Appearance	Liquid
Concentration	batch dependent
Storage	Store at 4°C for three months and -20°C, stable for up to one year. As with all antibodies care should be taken to avoid repeated freeze thaw cycles. Antibodies should not be exposed to prolonged high temperatures.
Note	For research use only
Application notes	For WB starting dilution is: 1:2000 For FACS starting dilution is: 1:10~50
Isotype	Rabbit Ig
Clonality	Polyclonal
MW	57 kDa
Uniprot ID	Q96PJ5
NCBI	Q96PJ5
Dilution Range	For WB starting dilution is: 1:2000 For FACS starting dilution is: 1:10~50
Expiration Date	12 months from date of receipt.



Western Blot at 1:2000 dilution Lane 1: ...



Western Blot at 1:2000 dilution Lane 1: ...



Flow cytometric analysis of Ramos cells ...