
Product Datasheet

FOXP1 Antibody (orb1262021)

Description

FOXP1 Antibody

Species/Host

Rabbit

Reactivity

Human

Conjugation

Unconjugated

Tested

FC, IHC-P, WB

Applications
Immunogen

This FOXP1 antibody is generated from rabbits immunized with a KLH conjugated synthetic peptide between 650-677 amino acids from the C-terminal region of human FOXP1.

Target

FOXP1

Preservatives

Supplied in PBS with 0.09% (W/V) sodium azide.

Form/Appearance

Liquid

Concentration

batch dependent

Storage

Store at 4°C for three months and -20°C, stable for up to one year. As with all antibodies care should be taken to avoid repeated freeze thaw cycles. Antibodies should not be exposed to prolonged high temperatures.

Note

For research use only

Application notes

For IHC-P starting dilution is: 1:25
For WB starting dilution is: 1:1000
For FACS starting dilution is: 1:10~50

Isotype

Rabbit Ig

Clonality

Polyclonal

MW

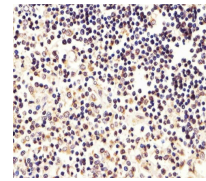
75 kDa

Uniprot ID
[Q9H334](#)
NCBI
[Q9H334](#)
Dilution Range

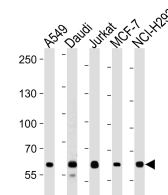
For IHC-P starting dilution is: 1:25
For WB starting dilution is: 1:1000
For FACS starting dilution is: 1:10~50

Expiration Date

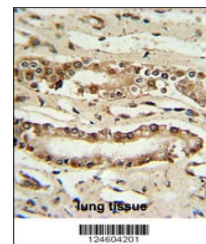
12 months from date of receipt.



Immunohistochemical analysis of paraffin...



Western blot analysis in A549, Daudi, Ju...



FOXP1 Antibody IHC analysis in formalin ...