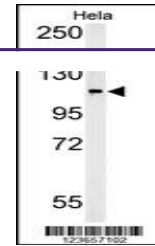
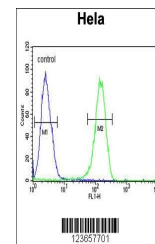

Product Datasheet

ADCY4 Antibody (orb1262005)

Description	ADCY4 Antibody
Species/Host	Rabbit
Reactivity	Human
Conjugation	Unconjugated
Tested Applications	FC, WB
Immunogen	This ADCY4 antibody is generated from rabbits immunized with a KLH conjugated synthetic peptide between 415-441 amino acids from the Central region of human ADCY4.
Target	ADCY4
Preservatives	Supplied in PBS with 0.09% (W/V) sodium azide.
Form/Appearance	Liquid
Concentration	batch dependent
Storage	Store at 4°C for three months and -20°C, stable for up to one year. As with all antibodies care should be taken to avoid repeated freeze thaw cycles. Antibodies should not be exposed to prolonged high temperatures.
Note	For research use only
Application notes	For WB starting dilution is: 1:1000 For FACS starting dilution is: 1:10~50
Isotype	Rabbit Ig
Clonality	Polyclonal
MW	120 kDa
Uniprot ID	Q8NFM4
NCBI	Q8NFM4
Dilution Range	For WB starting dilution is: 1:1000 For FACS starting dilution is: 1:10~50
Expiration Date	12 months from date of receipt.



Western Blot in HeLa cell line lysates (...)



Flow cytometric analysis of HeLa cells (...)