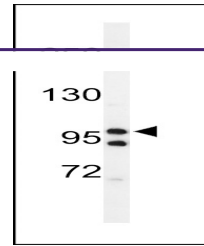
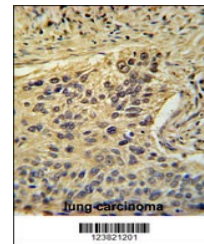

Product Datasheet

TAF2 Antibody (orb1261957)

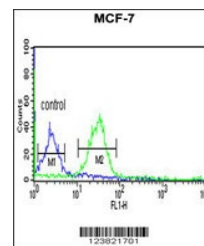
| | |
|----------------------------|--|
| Description | TAF2 Antibody |
| Species/Host | Rabbit |
| Reactivity | Human, Mouse |
| Conjugation | Unconjugated |
| Tested Applications | FC, IHC-P, WB |
| Immunogen | This TAF2 antibody is generated from rabbits immunized with a KLH conjugated synthetic peptide between 1152-1180 amino acids from the C-terminal region of human TAF2. |
| Target | TAF2 |
| Preservatives | Supplied in PBS with 0.09% (W/V) sodium azide. |
| Form/Appearance | Liquid |
| Concentration | batch dependent |
| Storage | Store at 4°C for three months and -20°C, stable for up to one year. As with all antibodies care should be taken to avoid repeated freeze thaw cycles. Antibodies should not be exposed to prolonged high temperatures. |
| Note | For research use only |
| Application notes | For WB starting dilution is: 1:1000For IHC-P starting dilution is: 1:50~100For FACS starting dilution is: 1:10~50 |
| Isotype | Rabbit Ig |
| Clonality | Polyclonal |
| MW | 137 kDa |
| Uniprot ID | Q6P1X5 |
| NCBI | Q6P1X5 |
| Dilution Range | For WB starting dilution is: 1:1000For IHC-P starting dilution is: 1:50~100For FACS starting dilution is: 1:10~50 |
| Expiration Date | 12 months from date of receipt. |



Western blot analysis of lysates from HT...



TAF2 Antibody immunohistochemistry analy...



Flow cytometric analysis of MCF-7 cells

...