

---

## Product Datasheet

### BASP1 Antibody (orb1261953)

**Description**

BASP1 Antibody

**Species/Host**

Rabbit

**Reactivity**

Human

**Conjugation**

Unconjugated

**Tested**

WB

**Applications**
**Immunogen**

This BASP1 antibody is generated from rabbits immunized with a KLH conjugated synthetic peptide between 123-150 amino acids from the Central region of human BASP1.

**Target**

BASP1

**Preservatives**

Supplied in PBS with 0.09% (W/V) sodium azide.

**Form/Appearance**

Liquid

**Concentration**

batch dependent

**Storage**

Store at 4°C for three months and -20°C, stable for up to one year. As with all antibodies care should be taken to avoid repeated freeze thaw cycles. Antibodies should not be exposed to prolonged high temperatures.

**Note**

For research use only

**Application notes**

For WB starting dilution is: 1:2000

**Isotype**

Rabbit Ig

**Clonality**

Polyclonal

**MW**

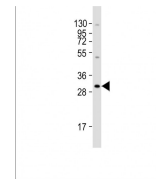
23 kDa

**Uniprot ID**
[P80723](#)
**NCBI**
[P80723](#)
**Dilution Range**

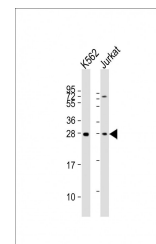
For WB starting dilution is: 1:2000

**Expiration Date**

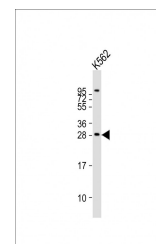
12 months from date of receipt.



Western Blot at 1:2000 dilution + DU145 ...



Western Blot at 1:2000 dilution Lane 1: ...



Western Blot at 1:2000 dilution + K562 w...