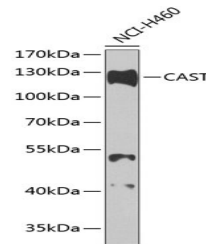


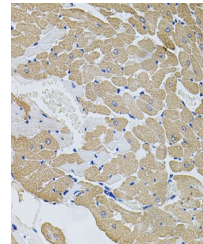
Product Datasheet

CAST Antibody (orb1261929)

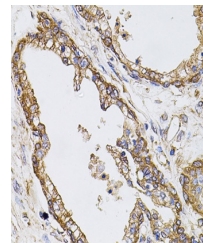
Description	CAST Antibody
Species/Host	Rabbit
Reactivity	Human, Mouse, Rat
Conjugation	Unconjugated
Tested Applications	IHC, WB
Immunogen	A synthetic peptide corresponding to a sequence within amino acids 600 to the C-terminus of human CAST (NP_001177371.1).
Target	CAST
Preservatives	Liquid
Form/Appearance	Liquid
Concentration	batch dependent
Storage	Store at -20˚°C. Avoid freeze / thaw cycles.
Note	For research use only
Application notes	WB: 1:200 - 1:2000IHC: 1:50 - 1:200
Isotype	IgG
Clonality	Polyclonal
MW	Observed: 124kDa
Uniprot ID	P20810
Dilution Range	WB: 1:200 - 1:2000IHC: 1:50 - 1:200
Expiration Date	12 months from date of receipt.



Western blot analysis of extracts of H46...



Immunohistochemistry of paraffin-embedde...



Immunohistochemistry of paraffin-embedde...