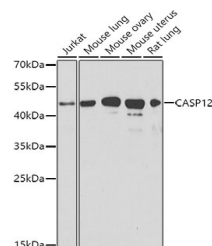


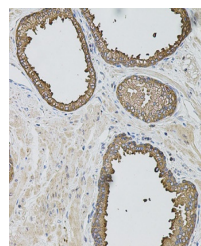
Product Datasheet

CASP12 Antibody (orb1261902)

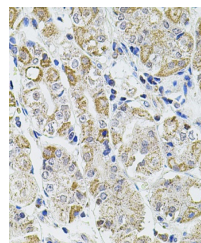
Description	CASP12 Antibody
Species/Host	Rabbit
Reactivity	Human, Mouse, Rat
Conjugation	Unconjugated
Tested Applications	IF, IHC, WB
Immunogen	A synthetic peptide corresponding to a sequence within amino acids 1-100 of human CASP12 (NP_001177945.2).
Target	CASP12
Preservatives	Liquid
Form/Appearance	Liquid
Concentration	batch dependent
Storage	Store at -20˚°C. Avoid freeze / thaw cycles.
Note	For research use only
Application notes	WB: 1:500 - 1:2000IHC: 1:50 - 1:100IF: 1:50 - 1:100
Isotype	IgG
Clonality	Polyclonal
MW	Observed: 42kDa
Uniprot ID	Q6UXS9
Dilution Range	WB: 1:500 - 1:2000IHC: 1:50 - 1:100IF: 1:50 - 1:100
Expiration Date	12 months from date of receipt.



Western blot analysis of extracts of var...



Immunohistochemistry of paraffin-embedde...



Immunohistochemistry of paraffin-embedde...