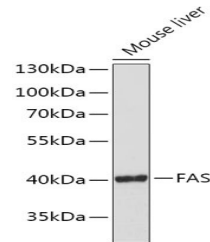


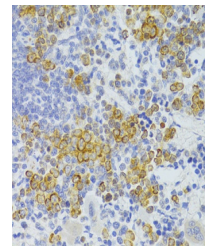
Product Datasheet

FAS Antibody (orb1261892)

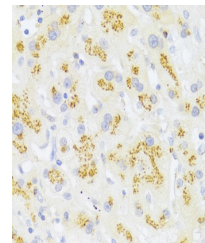
Description	FAS Antibody
Species/Host	Rabbit
Reactivity	Human, Mouse, Rat
Conjugation	Unconjugated
Tested Applications	IHC, WB
Immunogen	A synthetic peptide corresponding to a sequence within amino acids 150-250 of human FAS (NP_000034.1).
Target	FAS
Preservatives	Liquid
Form/Appearance	Liquid
Concentration	batch dependent
Storage	Store at -20˚°C. Avoid freeze / thaw cycles.
Note	For research use only
Application notes	WB: 1:500 - 1:2000IHC: 1:50 - 1:100
Isotype	IgG
Clonality	Polyclonal
MW	Observed: 38kDa
Uniprot ID	P25445
Dilution Range	WB: 1:500 - 1:2000IHC: 1:50 - 1:100
Expiration Date	12 months from date of receipt.



Western blot analysis of extracts of Mou...



Immunohistochemistry of paraffin-embedde...



Immunohistochemistry of paraffin-embedde...