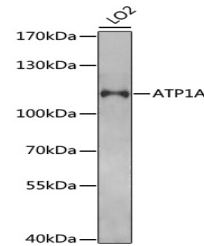


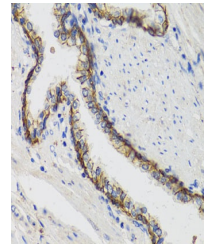
Product Datasheet

ATP1A Antibody (orb1261808)

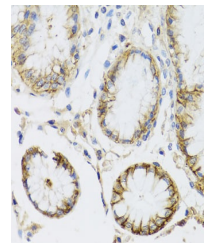
Description	ATP1A Antibody
Species/Host	Rabbit
Reactivity	Human
Conjugation	Unconjugated
Tested Applications	IHC, IP, WB
Immunogen	Recombinant fusion protein containing a sequence corresponding to amino acids 551-850 of human ATP1A (NP_000692.2).
Target	ATP1A
Preservatives	Liquid
Form/Appearance	Liquid
Concentration	batch dependent
Storage	Store at -20˚°C. Avoid freeze / thaw cycles.
Note	For research use only
Application notes	WB: 1:500 - 1:1000IHC: 1:50 - 1:200IP: 1:50 - 1:100
Isotype	IgG
Clonality	Polyclonal
MW	Observed: 113kDa
Uniprot ID	P05023
Dilution Range	WB: 1:500 - 1:1000IHC: 1:50 - 1:200IP: 1:50 - 1:100
Expiration Date	12 months from date of receipt.



Western blot analysis of extracts of LO2...



Immunohistochemistry of paraffin-embedde...



Immunohistochemistry of paraffin-embedde...