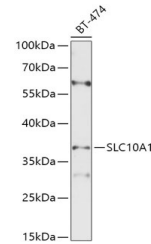


Product Datasheet

SLC10A1 Antibody (orb1261587)

Description	SLC10A1 Antibody
Species/Host	Rabbit
Reactivity	Human, Mouse, Rat
Conjugation	Unconjugated
Tested Applications	WB
Immunogen	Recombinant protein of mouse SLC10A1
Target	SLC10A1
Preservatives	PBS with 0.02% sodium azide, 50% glycerol, pH 7.3.
Form/Appearance	Liquid
Concentration	batch dependent
Storage	Store at -20°C. Avoid freeze / thaw cycles.
Note	For research use only
Application notes	WB: 1:500 - 1:2000
Isotype	IgG
Clonality	Polyclonal
MW	Observed: 38kDa
Dilution Range	WB: 1:500 - 1:2000
Expiration Date	12 months from date of receipt.



Western blot analysis of extracts of BT-...