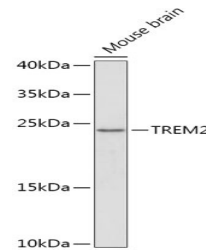


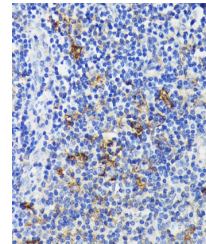
Product Datasheet

TREM2 Antibody (orb1261444)

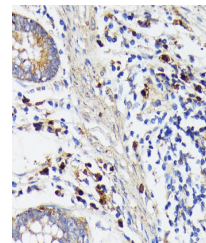
Description	TREM2 Antibody
Species/Host	Rabbit
Reactivity	Human, Mouse, Rat
Conjugation	Unconjugated
Tested Applications	IF, IHC, WB
Immunogen	Recombinant fusion protein containing a sequence corresponding to amino acids 19-160 of human TREM2 (NP_061838.1).
Target	TREM2
Preservatives	Liquid
Form/Appearance	Liquid
Concentration	batch dependent
Storage	Store at -20˚°C. Avoid freeze / thaw cycles.
Note	For research use only
Application notes	WB: 1:500 - 1:1000IHC: 1:50 - 1:200IF: 1:20 - 1:100
Isotype	IgG
Clonality	Polyclonal
MW	Observed: 25kDa
Uniprot ID	Q9NZC2
Dilution Range	WB: 1:500 - 1:1000IHC: 1:50 - 1:200IF: 1:20 - 1:100
Expiration Date	12 months from date of receipt.



Western blot analysis of extracts of Mou...



Immunohistochemistry of paraffin-embedde...



Immunohistochemistry of paraffin-embedde...