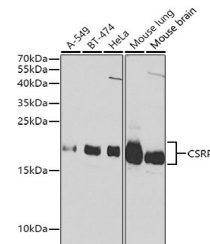


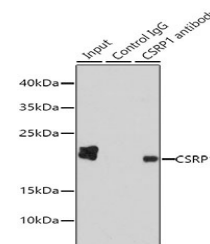
Product Datasheet

CSRP1 Antibody (orb1261364)

| | |
|----------------------------|---|
| Description | CSRP1 Antibody |
| Species/Host | Rabbit |
| Reactivity | Human, Mouse |
| Conjugation | Unconjugated |
| Tested Applications | IP, WB |
| Immunogen | Recombinant fusion protein containing a sequence corresponding to amino acids 1-193 of human CSRP1 (NP_004069.1). |
| Target | CSRP1 |
| Preservatives | Liquid |
| Form/Appearance | Liquid |
| Concentration | batch dependent |
| Storage | Store at -20°C. Avoid freeze / thaw cycles. |
| Note | For research use only |
| Application notes | WB: 1:500 - 1:2000IP: 1:50 - 1:200RIP: 1:20 - 1:50 |
| Isotype | IgG |
| Clonality | Polyclonal |
| MW | Observed: 21kDa |
| Uniprot ID | P21291 |
| Dilution Range | WB: 1:500 - 1:2000IP: 1:50 - 1:200RIP: 1:20 - 1:50 |
| Expiration Date | 12 months from date of receipt. |



Western blot analysis of extracts of var...



Immunoprecipitation analysis of 200ug ex...