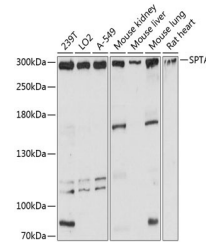


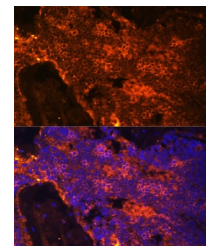
Product Datasheet

SPTA1 Antibody (orb1260963)

Description	SPTA1 Antibody
Species/Host	Rabbit
Reactivity	Human, Mouse, Rat
Conjugation	Unconjugated
Tested Applications	IF, WB
Immunogen	Recombinant fusion protein containing a sequence corresponding to amino acids 940-1160 of human SPTA1 (NP_003117.2).
Target	SPTA1
Preservatives	Liquid
Form/Appearance	Liquid
Concentration	batch dependent
Storage	Store at -20˚°C. Avoid freeze / thaw cycles.
Note	For research use only
Application notes	WB: 1:500 - 1:2000IF: 1:50 - 1:200
Isotype	IgG
Clonality	Polyclonal
MW	Observed: 300kDa
Uniprot ID	P02549
Dilution Range	WB: 1:500 - 1:2000IF: 1:50 - 1:200
Expiration Date	12 months from date of receipt.

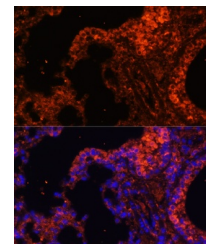


Western blot analysis of extracts of var...



Immunofluorescence analysis of rat bone

...



Immunofluorescence analysis of mouse lun...