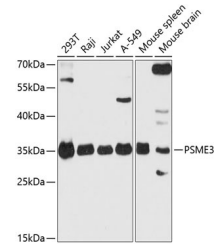


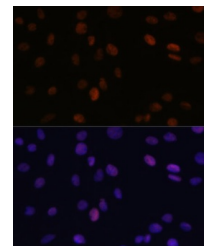
Product Datasheet

PSME3 Antibody (orb1260785)

Description	PSME3 Antibody
Species/Host	Rabbit
Reactivity	Human, Mouse, Rat
Conjugation	Unconjugated
Tested Applications	IF, WB
Immunogen	A synthetic peptide corresponding to a sequence within amino acids 100 to the C-terminus of human PSME3 (NP_005780.2).
Target	PSME3
Preservatives	Liquid
Form/Appearance	Liquid
Concentration	batch dependent
Storage	Store at -20°C. Avoid freeze / thaw cycles.
Note	For research use only
Application notes	WB: 1:1000 - 1:2000IF: 1:50 - 1:200
Isotype	IgG
Clonality	Polyclonal
MW	Observed: 35kDa
Uniprot ID	P61289
Dilution Range	WB: 1:1000 - 1:2000IF: 1:50 - 1:200
Expiration Date	12 months from date of receipt.

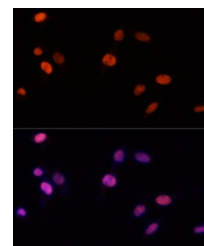


Western blot analysis of extracts of var...



Immunofluorescence analysis of C6 cells

...



Immunofluorescence analysis of NIH-3T3

C...