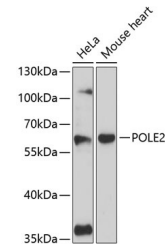


Product Datasheet

POLE2 Antibody (orb1260725)

Description	POLE2 Antibody
Species/Host	Rabbit
Reactivity	Human, Mouse
Conjugation	Unconjugated
Tested Applications	WB
Immunogen	Recombinant fusion protein containing a sequence corresponding to amino acids 1-290 of human POLE2 (NP_002683.2).
Target	POLE2
Preservatives	Liquid
Form/Appearance	Liquid
Concentration	batch dependent
Storage	Store at -20˚°C. Avoid freeze / thaw cycles.
Note	For research use only
Application notes	WB: 1:500 - 1:2000
Isotype	IgG
Clonality	Polyclonal
MW	Observed: 59kDa
Uniprot ID	P56282
Dilution Range	WB: 1:500 - 1:2000
Expiration Date	12 months from date of receipt.



Western blot analysis of extracts of var...