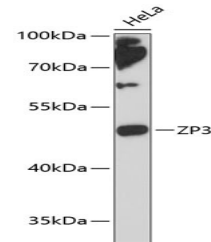


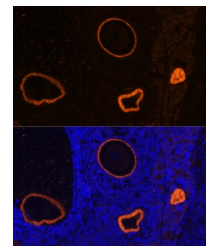
Product Datasheet

ZP3 Antibody (orb1260561)

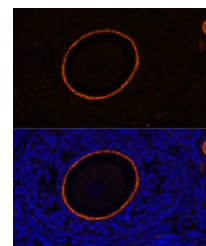
Description	ZP3 Antibody
Species/Host	Rabbit
Reactivity	Human, Mouse, Rat
Conjugation	Unconjugated
Tested Applications	IF, WB
Immunogen	A synthetic peptide corresponding to a sequence within amino acids 250-350 of human ZP3 (NP_001103824.1).
Target	ZP3
Preservatives	Liquid
Form/Appearance	Liquid
Concentration	batch dependent
Storage	Store at -20˚°C. Avoid freeze / thaw cycles.
Note	For research use only
Application notes	WB: 1:500 - 1:2000IF: 1:50 - 1:200
Isotype	IgG
Clonality	Polyclonal
MW	Observed: 47kDa
Uniprot ID	P21754
Dilution Range	WB: 1:500 - 1:2000IF: 1:50 - 1:200
Expiration Date	12 months from date of receipt.



Western blot analysis of extracts of HeL...



Immunofluorescence analysis of rat oopho...



Immunofluorescence analysis of rat oopho...