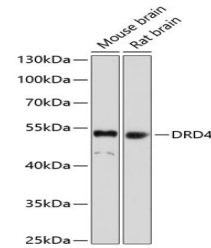


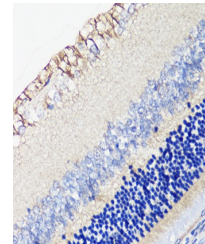
## Product Datasheet

### DRD4 Antibody (orb1260448)

<b>Description</b>	DRD4 Antibody
<b>Species/Host</b>	Rabbit
<b>Reactivity</b>	Mouse, Rat
<b>Conjugation</b>	Unconjugated
<b>Tested Applications</b>	IHC, WB
<b>Immunogen</b>	A synthetic peptide corresponding to a sequence within amino acids 100-200 of human DRD4 (NP_000788.2).
<b>Target</b>	DRD4
<b>Preservatives</b>	Liquid
<b>Form/Appearance</b>	Liquid
<b>Concentration</b>	batch dependent
<b>Storage</b>	Store at -20°C. Avoid freeze / thaw cycles.
<b>Note</b>	For research use only
<b>Application notes</b>	WB: 1:500 - 1:1000 IHC: 1:50 - 1:200
<b>Isotype</b>	IgG
<b>Clonality</b>	Polyclonal
<b>MW</b>	Observed: 52kDa
<b>Uniprot ID</b>	<b>P21917</b>
<b>Dilution Range</b>	WB: 1:500 - 1:1000 IHC: 1:50 - 1:200
<b>Expiration Date</b>	12 months from date of receipt.



Western blot analysis of extracts of var...



Immunohistochemistry of paraffin-embedde...