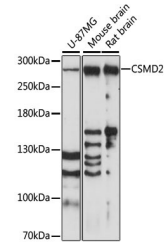


Product Datasheet

CSMD2 Antibody (orb1260040)

Description	CSMD2 Antibody
Species/Host	Rabbit
Reactivity	Human, Mouse, Rat
Conjugation	Unconjugated
Tested Applications	WB
Immunogen	A synthetic peptide corresponding to a sequence within amino acids 2050-2150 of human CSMD2 (NP_443128.2).
Target	CSMD2
Preservatives	Liquid
Form/Appearance	Liquid
Concentration	batch dependent
Storage	Store at -20°C. Avoid freeze / thaw cycles.
Note	For research use only
Application notes	WB: 1:500 - 1:2000
Isotype	IgG
Clonality	Polyclonal
MW	Observed: 280kDa
Uniprot ID	Q7Z408
Dilution Range	WB: 1:500 - 1:2000
Expiration Date	12 months from date of receipt.



Western blot analysis of extracts of var...