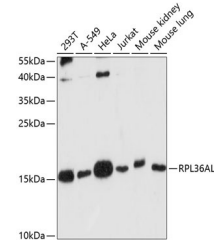


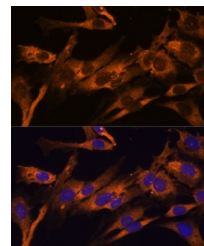
Product Datasheet

RPL36AL Antibody (orb1259985)

Description	RPL36AL Antibody
Species/Host	Rabbit
Reactivity	Human, Mouse, Rat
Conjugation	Unconjugated
Tested Applications	IF, WB
Immunogen	Recombinant fusion protein containing a sequence corresponding to amino acids 1-106 of human RPL36AL (NP_000992.1).
Target	RPL36AL
Preservatives	Liquid
Form/Appearance	Liquid
Concentration	batch dependent
Storage	Store at -20˚°C. Avoid freeze / thaw cycles.
Note	For research use only
Application notes	WB: 1:500 - 1:2000IF: 1:50 - 1:100
Isotype	IgG
Clonality	Polyclonal
MW	Observed: 16kDa
Uniprot ID	Q969Q0
Dilution Range	WB: 1:500 - 1:2000IF: 1:50 - 1:100
Expiration Date	12 months from date of receipt.

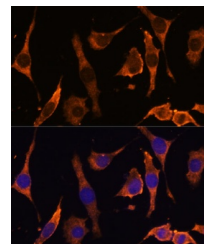


Western blot analysis of extracts of var...



Immunofluorescence analysis of C6 cells

...



Immunofluorescence analysis of L929 cell...