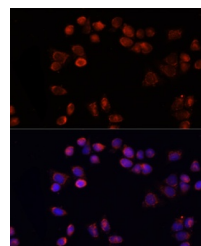


Product Datasheet

SLC25A4 Antibody (orb1259698)

Description	SLC25A4 Antibody
Species/Host	Rabbit
Reactivity	Human
Conjugation	Unconjugated
Tested Applications	IF, WB
Immunogen	Recombinant fusion protein containing a sequence corresponding to amino acids 40-298 of human SLC25A4 (NP_001142.2).
Target	SLC25A4
Preservatives	Liquid
Form/Appearance	Liquid
Concentration	batch dependent
Storage	Store at -20˚°C. Avoid freeze / thaw cycles.
Note	For research use only
Application notes	WB: 1:500 - 1:2000IF: 1:50 - 1:200
Isotype	IgG
Clonality	Polyclonal
Uniprot ID	P12235
Dilution Range	WB: 1:500 - 1:2000IF: 1:50 - 1:200
Expiration Date	12 months from date of receipt.



Immunofluorescence analysis of HeLa cell...