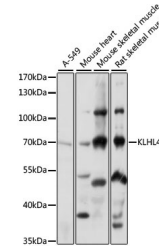


Product Datasheet

KLHL41 Antibody (orb1259531)

Description	KLHL41 Antibody
Species/Host	Rabbit
Reactivity	Human, Mouse, Rat
Conjugation	Unconjugated
Tested Applications	WB
Immunogen	Recombinant fusion protein containing a sequence corresponding to amino acids 1-300 of human KLHL41 (NP_006054.2).
Target	KLHL41
Preservatives	Liquid
Form/Appearance	Liquid
Concentration	batch dependent
Storage	Store at -20˚°C. Avoid freeze / thaw cycles.
Note	For research use only
Application notes	WB: 1:200 - 1:2000
Isotype	IgG
Clonality	Polyclonal
MW	Observed: 68kDa
Uniprot ID	O60662
Dilution Range	WB: 1:200 - 1:2000
Expiration Date	12 months from date of receipt.



Western blot analysis of extracts of var...