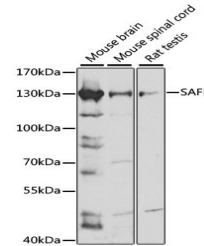


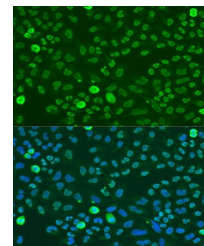
Product Datasheet

SAFB Antibody (orb1259371)

| | |
|----------------------------|---|
| Description | SAFB Antibody |
| Species/Host | Rabbit |
| Reactivity | Human, Mouse, Rat |
| Conjugation | Unconjugated |
| Tested Applications | IF, WB |
| Immunogen | A synthetic peptide corresponding to a sequence within amino acids 300-400 of human SAFB (NP_002958.2). |
| Target | SAFB |
| Preservatives | Liquid |
| Form/Appearance | Liquid |
| Concentration | batch dependent |
| Storage | Store at -20°C. Avoid freeze / thaw cycles. |
| Note | For research use only |
| Application notes | WB: 1:500 - 1:2000IF: 1:50 - 1:200 |
| Isotype | IgG |
| Clonality | Polyclonal |
| Uniprot ID | Q15424 |
| Dilution Range | WB: 1:500 - 1:2000IF: 1:50 - 1:200 |
| Expiration Date | 12 months from date of receipt. |



Western blot analysis of extracts of var...



Immunofluorescence analysis of U2OS cell...