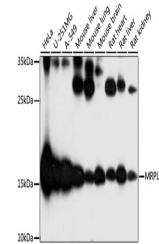


Product Datasheet

MRPL23 Antibody (orb1259013)

Description	MRPL23 Antibody
Species/Host	Rabbit
Reactivity	Human, Mouse, Rat
Conjugation	Unconjugated
Tested Applications	WB
Immunogen	Recombinant fusion protein containing a sequence corresponding to amino acids 1-153 of human MRPL23 (NP_066957.3).
Target	MRPL23
Preservatives	Liquid
Form/Appearance	Liquid
Concentration	batch dependent
Storage	Store at -20˚°C. Avoid freeze / thaw cycles.
Note	For research use only
Application notes	WB: 1:500 - 1:2000
Isotype	IgG
Clonality	Polyclonal
MW	Observed: 15kDa
Uniprot ID	Q16540
Dilution Range	WB: 1:500 - 1:2000
Expiration Date	12 months from date of receipt.



Western blot analysis of extracts of var...