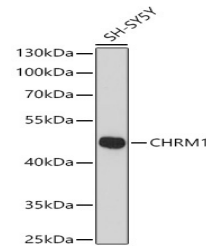


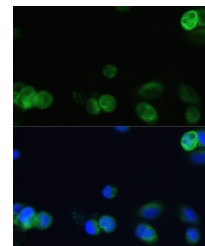
Product Datasheet

CHRM1 Antibody (orb1258862)

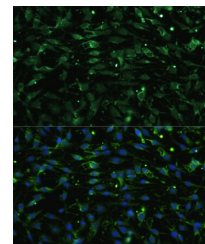
Description	CHRM1 Antibody
Species/Host	Rabbit
Reactivity	Human, Mouse, Rat
Conjugation	Unconjugated
Tested Applications	IF, WB
Immunogen	A synthetic peptide of human CHRM1.
Target	CHRM1
Preservatives	Liquid
Form/Appearance	Liquid
Concentration	batch dependent
Storage	Store at -20°C. Avoid freeze / thaw cycles.
Note	For research use only
Application notes	WB: 1:500 - 1:2000IF: 1:50 - 1:200
Isotype	IgG
Clonality	Polyclonal
MW	Observed: 50kDa
Uniprot ID	P11229
Dilution Range	WB: 1:500 - 1:2000IF: 1:50 - 1:200
Expiration Date	12 months from date of receipt.



Western blot analysis of extracts of SH-...



Immunofluorescence analysis of OVCAR-3 C...



Immunofluorescence analysis of C6 cells